

# *The Value of Independence*

MEAT AND LIVESTOCK COMMERCIAL SERVICES LTD (MLCSL)

## MLCSL's EQUIPMENT



**EQUIPMENT SERVICES • EQUIPMENT HOTLINE 02476 478625**

**EMAIL ORDERS OR ENQUIRIES TO [INFO@MLCSL.CO.UK](mailto:INFO@MLCSL.CO.UK)**

# EQUIPMENT FOR THE MEAT PROCESSING INDUSTRY

**MLCSL offer a range of equipment for the meat processing industry, contributing to industry efficiency and assisting individual operators to comply with increasingly strict legislative requirements.**

## Black Box Data Capture Systems

The development and supply of the Black Box Data Capture Systems has assisted the slaughter sector to introduce computerised systems and in its field is now the market leader. A wide range of quality carcass labels compliment the data capture package and provide significant improvements to traceability with detailed, efficiently produced labelling for each carcass.

The Black Box Data Capture System has assisted the slaughter sector to introduce a computerised classification system to the slaughterline. The Black Box is a portable self contained classification system that can be used as a stand alone package or as part of a larger networked system from lairage to livestock payments. It is the market leader with over 60 abattoirs in Britain using the equipment. MLCSL both sells and rents the equipment to the abattoir sector. This equipment is used by MLCSL or the abattoir staff, depending on who carries out the classification service.

### The system is popular because of its:

- Portability, which allows one terminal to classify all species
- Fast data entry method can keep up with even the fastest kill lines
- Data is stored in the terminal and does not rely on any other software or PCs to continue running
- Can be linked in with automatic classification equipment
- Modular format means that hardware or software systems can be added at any time
- Gives a full package from lairage to despatch including stock control and payments

The use of the Black Box Data Capture System is an efficient, effective and economic way to collect data both from the lairage area and on the slaughter line, providing the basis for traceability throughout the rest of the processing chain.



## The Stun Assurance Monitor (SAM)

The Stun Assurance Monitor (SAM) makes an important contribution to welfare standards at a critical point in the slaughter process by providing assurance to consumers that welfare standards are closely monitored. It has the ability to demonstrate high levels of performance in the stunning operation both in real time and from the comprehensive reporting facility. This allows detailed analysis of stuns and provides further confidence in the meat supply chain.

The SAM is an innovative equipment development which offers exciting progress in the industry's ability to demonstrate high levels of performance in the stunning operation.

### In summary, the SAM provides:

**Animal Welfare** The performance of the stun operation is of critical importance at the point of slaughter. The SAM provides a 'real time' monitoring capability for the stunner operator, abattoir management and the Official Veterinary Surgeon (OVS).

**Stun Operator Training** The comprehensive reporting facility within the PC software supplied with the SAM allows detailed analysis of operator performance. This can make a significant contribution to enable tailored training requirements to be constructed to increase performance standards.

**Health & Safety** Analysis of each operator stunning performance and team comparisons can be used to identify fatigue and stress factors, increasing the ability to structure shifts and workloads to minimise risk to operators.

**Tong Performance** Analysis by individual tong performance allows the early detection of faults, increasing the ability to maintain performance and avoid operational failure and throughput delays.

**Quality Control** The impact of stunning on meat quality can be significant. The analysis of stun profiles can pinpoint operational issues and allow corrective action to be taken, avoiding impact on carcass quality.

**Product Provenance** The use of SAM will enhance the provenance of resulting products through an increased ability to assure customers throughout the supply chain that animals were correctly stunned at this critical point within the slaughter process.

**HALAL** The Muslim religion will only allow healthy animals to be slaughtered for Halal. The ability to demonstrate that stuns are consistently delivered within agreed parameters which may allow Muslims to accept stunning as a pre-requisite to slaughter.

**HALAL Approval** SAM is approved by the Halal Food Authority and the UK Halal Corporation who have incorporated SAM as part of their assurance standards.



## Carcase Tags and Labels

**Any tag or labelling requirements available Industry standards or bespoke designs**

- High quality polypropylene thermal carcass tags
- 3 tag sizes 181mm, 219mm & 279mm (x45mm)
- Bespoke tags and labels including company logo's or details
- Coloured tags with and without blue stripe

### MLCSL logo tags

Available for companies that have MLCSL Authentication Services – highlights the quality and independent service you receive to producers and your customers.

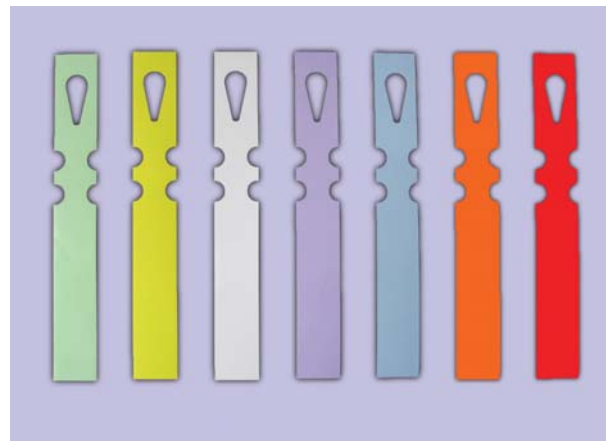
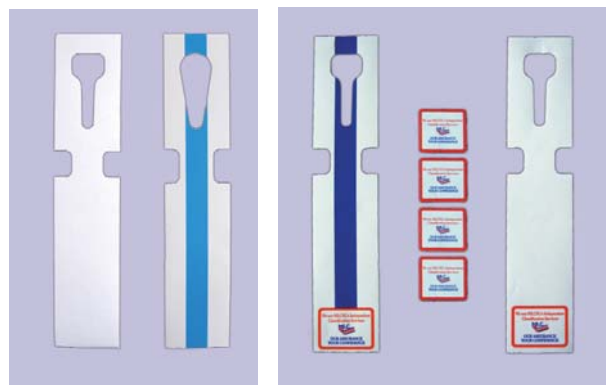
### Thermal and retail self adhesive labels

- Thermal labels 100 x 45mm available in plain white or white with blue stripe
- Retail labels with full colour detail made to your exact requirements

### Selection tags

- 190 x 25mm thermal polypropylene tags
- Ideal for visual identification, hand written identification or thermal printing
- Available in white, green, purple, blue, yellow, orange and red

*(Other colours available subject to quantities required)*



**Get in touch for a free quote or visual samples**

## Meat marking pencils and 2, 3 and 4 ply listing paper

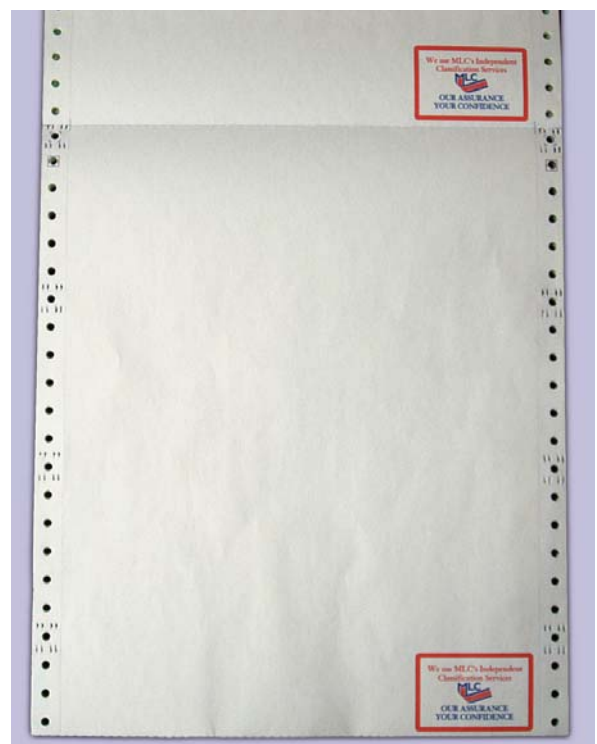
### High quality meat marking pencils

- 12 pencils per box
- Food safe
- Available in brown or blue
- Competitive prices
- No minimum order quantities required
- Product data sheet available on request



### Listing paper available in 2, 3, 4 ply with or without MLCSL assurance logo on top copy for companies using the Authentication Services

- Plain and non-logo listing paper, also available in 2, 3 and 4 ply
- High quality paper
- Fast delivery
- Competitive prices
- White, yellow, pink and green colour available (4 ply)



## Official UK suppliers of the Optical Probe

- Brand new and reconditioned probes for sale
- Replacement bulbs and parts
- Full service and repairs with work usually carried out on same day of receipt plus same day return
- Probes available for hire
- Probe use and care advice
- **NEW** LED conversion. Cheaper to run. LED last longer than bulbs.



*Free estimates available*

## CCTV Installations

- Multi camera systems tailored to your needs
- Personal video recorders
- Optional independent monitoring available



## SONIXS Strapping Machines

- Only machine of its type in the world
- Completely corrosion resistant
- Made of food grade stainless steel and non oxidating material (aluminium)
- Sealed control cabinet and electrical components
- IP class of 6S. It can be cleaned by steam blasting up to moderate pressure

### Benefits of SONIXS head

- No heater
- No oil residue from melting strap when sealing
- Lower running cost and less down time





# MLCSL's EQUIPMENT

Stoneleigh Park  
Kenilworth  
Warwickshire  
CV8 2TL

fax: 02476 692405

email: [info@mlcsl.co.uk](mailto:info@mlcsl.co.uk)

[www.mlcsl.co.uk](http://www.mlcsl.co.uk)



**EQUIPMENT SERVICES • EQUIPMENT HOTLINE 02476 478625**  
**EMAIL ORDERS OR ENQUIRIES TO [INFO@MLCSL.CO.UK](mailto:INFO@MLCSL.CO.UK)**